

PT Bitratex Industrial Corporation



Solomon Case Study — Manufacturing

A stitch in time saves nine, discovered PT Bitratex Industries, an established textile company in Indonesia. Since the implementation of Solomon Enterprise Resource Planning (ERP) solution at two of its plants in Jakarta and Semarang, PT Bitratex has benefited in more ways than one.

The company switched to Solomon IV ERP system when its former accounting system was not an integrated system. “As our business grew, it became more time-consuming to perform these tasks manually,” commented Vijay Badheka, General Manager, PT Bitratex Industries. “There was a pressing need to automate some tasks to cope with increasing workload.”

To increase productivity, PT Bitratex decided to upgrade to an advanced business management system that was more powerful and flexible. It successfully made the transition to automation with the implementation of Solomon IV’s Financial and Distribution Series at its both Jakarta and Semarang plant.

The company has 10 modules: System Manager, Accounts Payable, Accounts Receivable, Cash Manager, Currency Manager, General Ledger, Inventory, Order Processing,

Purchasing and Order Management. Solomon IV runs on Microsoft Windows NT/2000 Server network operating system and Microsoft SQL Server database.

Powerful Integrated Solution

Before implementing Solomon IV ERP software, PT Bitratex relied on an in-house accounting system which could not be optimized to manage for integrated accounting functions.

Some of the core accounting tasks had to be performed manually. For instance, the company had 3 different systems to monitor 3 types of inventory – Raw Material, Finished Goods and Stores/Spares.

The former accounting system only provided General Ledger function and was unable to reflect Accounts Payable. Consequently, sales figures had to be manually transferred to the General Ledger through journal entries.

The growing needs to automate the accounting processes led to a search for an integrated system with enhanced capabilities. Vijay stressed, “One of the key components we looked for before we decided on Solomon

business and financial applications was how easily these applications can be expanded and over different locations.”

“During this process, we discover the transaction processing capabilities, scalabilities, and cost-effectiveness of running Solomon ERP system,” said Vijay. “We realized that Solomon ERP and accounting solutions

Solution Overview

Company Profile

Formerly known as Taisho Textile Industries, PT Bitratex Industrial Corporation was established in 1973. Today, it employs over 1,000 highly skilled workers. Its vertically integrated unit is located in Jakarta, Indonesia. The company offers a unique product range, such as embroidery, wrap knit raschel laces, and jacquard curtain laces. It exports to premier markets including the USA, Canada, Australia, New Zealand, UK, Europe, Middle Eastern and Far Eastern countries, and South Africa.

Situation

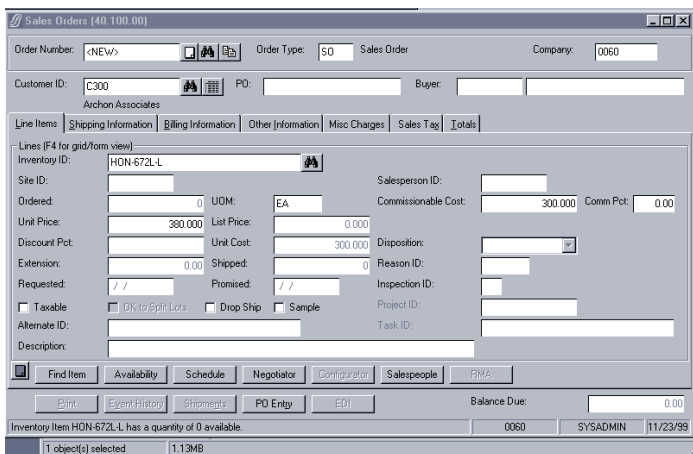
PT Bitratex was using an in-house developed system that could not integrate various functions, had limited capabilities, was cumbersome to upkeep and heavily dependent on manual tasks. As a result, PT Bitratex found it difficult to manage resource allocation, and keep production and overhead costs low. To complicate matters, the system only provided the General Ledger function and staff had to manipulate data and perform calculations manually. This took up a lot of time, and it was easy for errors to occur.

Business Solution

In the first phase of implementation, 10 modules were installed at the Jakarta site: System Manager, Accounts Payable, Accounts Receivable, Cash Manager, Currency Manager, General Ledger, Inventory, Order Processing, Purchasing and Order Management. They provide PT Bitratex with reliable and efficient financial reporting, order processing, payment, inventory tracking and cost control. The next phase will add the same modules with more outstanding capabilities to the Semarang site.

Benefits

Solomon IV has improved overall efficiency by 65 percent. This enables the sales staff to save an average of three hours per day, which they can devote to selling. The software has automated several processes, such as ordering processing, sales invoicing and calculating local tax. Staff are able to complete the monthly billing run in just one fifth of the time it took previously. By integrating Accounts Receivable,



Configuring unique order types is simple with Solomon Order Management modules.



could be easily adapted to suit our back office needs.”

“We zeroed in on Solomon IV as we were impressed with its customization and flexibility in terms of meeting our needs,” Vijay added. In addition, Vijay was impressed with the strong local support provided by PT Graha TechnoSoft Informatika, Solomon’s value-added reseller. Besides implementing Solomon IV at PT Bitratex’s Jakarta plant, the company has put together a training program for its office users.

Enhanced Productivity, Accuracy and Cost Control

“In the past, the entire process of report generation required the staff to undertake several steps to consolidate manual spreadsheets and data,” Vijay observed. “What the company needed was an integrated system to monitor inventory movement. By having Accounts Receivable, Accounts Payable, and Cash Manager with General Ledger, PT Bitratex is now able to enjoy effectiveness in generating financial analysis and reports.”

“The new system is far more convenient and user-friendly. But more importantly, we can now generate reports faster and view financial reporting information onscreen with just one click of a button,” remarked Vijay.

By adopting Solomon IV Financial and Distribution modules, cost control has also improved. Vijay pointed out,

“Speed and accuracy are very important to any business. Solomon IV is both reliable and flexible, and has helped us pinpoint our costs more effectively.”

Another advantage is the software’s ability to track inventory. “After the implementation of the software, PT Bitratex is able to manage its inventory levels effortlessly,” Vijay said.

Proven Platform for Future Growth

“While some of the tasks are still undertaken manually, we are now able to allocate out time and resources more efficiently and within a specific financial timeline,” Vijay cited.

Solomon IV simplifies and speeds up integration across multiple locations onto a single platform. The migration to an automated ERP system plays an imperative part in preparing the company expands its business operations. “With the smooth transition, PT Bitratex is ready and poised for greater business expansion in the region,” Vijay summed up with confidence.

Vijay Badheka
General Manager
PT Bitratex Industries



Accounts Payable, Cash Manager with General Ledger, Solomon IV also provides enhanced productivity and cost control. Staff can access financial reporting information at a click, and generate customized reports easily. They are able to manage inventory more efficiently and accurately. This also means that better pricing decisions can now be made.

For More Information

About Solomon

For more information about Solomon Software and its business applications, call (65) 224 6795 or visit Solomon at www.solomon.com.sg

About PT Bitratex Industrial Corporation

Jl. Raya Bekasi Km 23,
PO Box 1385/JKT 13013
Jakarta 13910

Solomon IV Software Used

System Manager	General Ledger
Accounts Payable	Inventory
Accounts Receivable	Order Processing
Cash Manager	Purchasing
Currency Manager	Order Management

Other Products Integrated

Platform: Microsoft Windows NT Server and Microsoft SQL Database



For more information on Solomon IV®, contact:

www.solomon.com.sg

Solomon Software SEA
10 Anson Road #19-12
International Plaza
Singapore 079903
Tel : (65) 224 6795
Fax : (65) 224 6796

Solomon Software, the Solomon logo, and Solomon IV® are trademarks of, and *Flexibility to get you there. Faster* is a service mark of Solomon Software, Inc. Other products are trademarks of their respective owners. © Copyright 1999 Solomon Software, Inc. All Rights Reserved.

All features/functions mentioned within are subject to change. This document is for information purposes only. Solomon Software, Inc. makes no warranties, express or implied, in this document.